



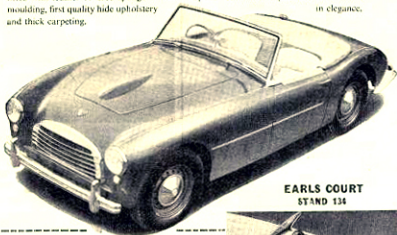
Power graced by elegance

SPEED Packed into the 2 litre engine of the Swallow Doretti is all the surging power needed to send the miles scudding behind. Although capable of over 100 miles an hour the car is ideal for fast touring at 75 to 90 m.p.h., at the same time high performance is combined with exceptionally economical running.

COMFORT Controls and steering are so arranged to give maximum comfort for the driver, while the interior is luxuriously fitted with leather covered sponge rubber moulding, first quality hide upholstery and thick carpeting.

SAFETY The 50-ton tubular steel chassis of the Swallow Doretti is specially built to meet the stresses of high-speed motoring and to ensure the greatest possible stability; hydraulic brakes are also fitted, thus you can drive this fine car knowing that every device to provide the greatest possible safety has been incorporated.

STYLE Friends will stop and admire the smooth, sleek lines of your Swallow Doretti. Beautifully styled on the classical Sports Car lines it provides the utmost in elegance.

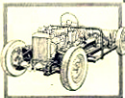


EARLS COURT
STAND 134

Swallow Doretti

The sports car you will be proud to own

Price £777.0s.6d. P.T. £324.17s.6d.
For name of nearest Distributor write or
phone to
THE SWALLOW COACHBUILDING
COMPANY (1935) LTD.
The Airport, Walsall, Staffs. Walsall 4533



ABOVE is shown the luxurious interior of the Swallow Doretti with controls neatly grouped in front of the driver, while LEFT shows the 50-ton tubular steel chassis that ensures complete stability.